

Kidney Leaf Mud Plantain

(Heteranthera reniformis)

Kidney Leaf Mud Plantain (KLMP) grows prolifically in highly disturbed, shallow, freshwater habitats. It was introduced into Australia as a pond plant, with escaped plants colonising freshwater streams, ponds, and mudflats.



Weed Class: Class 1 noxious weed.

Description: Aquatic plant with stalk 2-15cm long.

Leaves: Bright glossy green, kidney-shaped, 1-4cm long and 1-5cm across.

Flowers: Borne in clusters (racemes). Small white or pale blue, with 6 petals.

Fruit: Small capsule containing tiny winged seeds (less than 1mm).

Dispersal: Seeds can last for many years. Vegetative reproduction from stem fragments.

Habitat: Naturalising in disturbed habitats, roadside ditches, riverbanks, streams, ponds, and freshwater tidal mudflats – a serious threat to native vegetation.

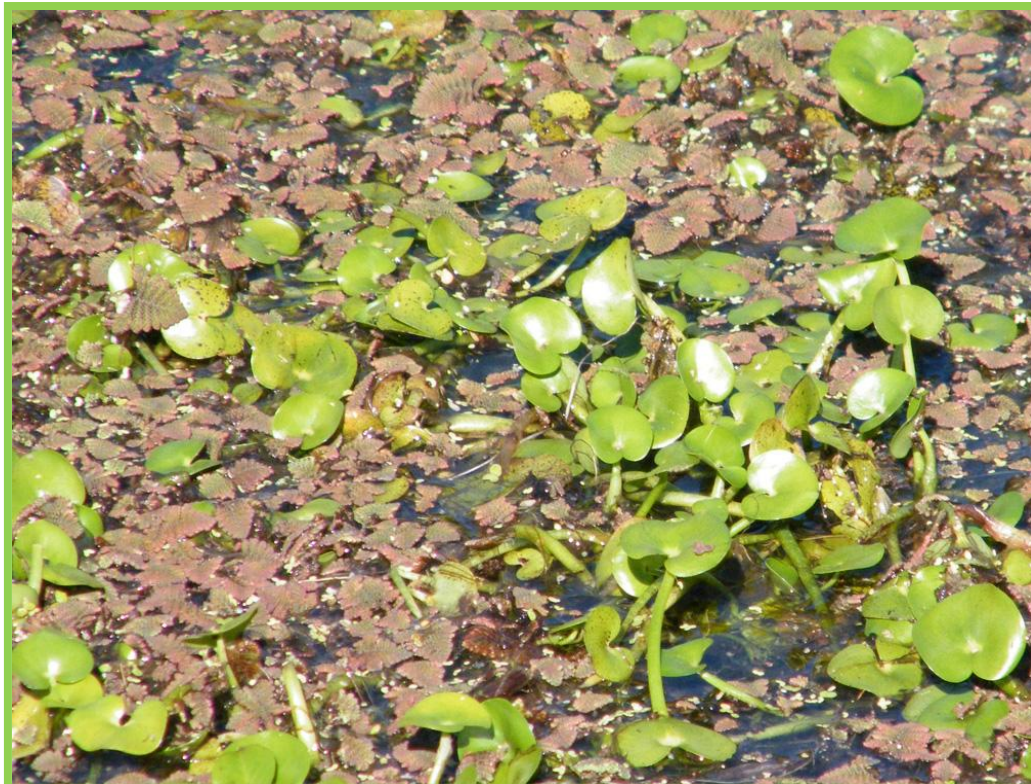
Kidney Leaf Mud Plantain (*Heteranthera reniformis*)

Control options

The shallow growing depth suggests that KLMP may allow mechanical removal. However, as the plant can reproduce vegetatively, this may lead to further spread through fragmentation.

If mechanical or manual removal is to be undertaken, strict hygiene protocols will need to be implemented and followed. The added disturbance will encourage seed strike and follow-up treatment will be required.

If you suspect you have KLMP on your property, or know of any locations of suspected KLMP, please contact your Local Control Authority for positive identification and assistance.



More information:

- www.northcoastweeds.org.au
- www.weeds.org.au
- www.clarence.nsw.gov.au
- www.coffsharbour.nsw.gov.au
- www.bellingen.nsw.gov.au
- www.nambucca.nsw.gov.au
- www.clarence.nsw.gov.au
- www.fnwc.nsw.gov.au

Disclaimer: the advice provided in this publication is intended as a source of information only. Always read the label before using any of the products mentioned. The North Coast Weeds Advisory Committee and associated staff do not guarantee that the publication is without flaw of any kind or is wholly appropriate for your particular purposes and therefore disclaims all liability for any error, loss or other consequence, which may arise from you relying on any information in this publication.