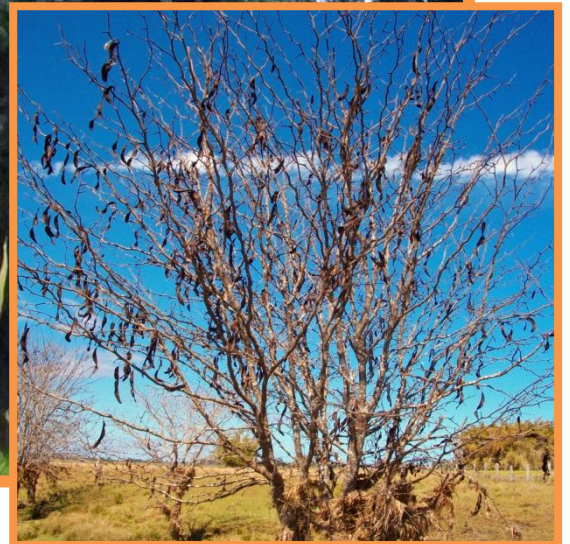


Honey Locust

(*Gleditsia tricanthos*)

Honey Locust, a member of the Fabaceae family, is an extremely invasive species that can smother pastures and native vegetation. It has been known to cause injury to humans and livestock, and puncture car and tractor tyres, with its sharp spikes.



Status in Far North Coast Weeds area

The Noxious Weeds Act 1993 imposes obligations on occupiers of land to control noxious weeds declared in their area. Honey Locust is a Class 3 noxious plant in the north coast area and all landowners and occupiers must fully and continuously suppress and destroy this plant.

Honey Locust (*Gleditsia tricanthos*)

Origin

Honey Locust is native to North Eastern America, introduced to Australia as a fodder tree for stock feed. It was also widely used as an ornamental plant.

Description

Honey Locust is a deciduous tree that can reach heights of 20-30m. Leaves are dark green, about 10cm long with around 20 opposite paired leaflets. In October and November it produces a creamy-yellow flower that develops into a 20-30cm long flat brown/black pod; each pod can contain up to 30 seeds. The plant reproduces prolifically and stock relish the legume's seed pods.

The trunk and limbs of the Honey Locust tree are covered in very sharp needle-like spines that have been known to grow over 50mm in length.



Distribution

Scattered infestations of Honey Locust can be found in Far North NSW, with heavier infestation near Tatham and isolated heavy infestations on the Richmond River as well as parts of the Kyogle Shire.

Honey Locust is also present in other areas of NSW and Queensland.

Invasive traits

Honey Locust is an extremely drought tolerant, adaptable species that is free from disease and insect attack in Australia. Fast growing, it quickly establishes dense thickets that displace other species. Capable of reproducing very quickly, each seed pod contains 20-30 seeds and a mature Honey Locust can produce hundreds of these seed pods each year.

Dispersal method

Seed is spread by:

- Grazing stock eating pods and passing seed in dung.
- Floodwater transporting floating pods.
- People planting it as an ornamental or for fodder.

Control methods

Refer to the **Noxious and environmental weeds control handbook (5th edition; 2011)** available at the Industry & Investment website:

<http://www.dpi.nsw.gov.au/agriculture/pests-weeds/weeds/publications/noxious-enviro-weed-control>

More information:

- www.northcoastweeds.org.au
- www.weeds.org.au
- www.clarence.nsw.gov.au
- www.coffsharbour.nsw.gov.au
- www.bellingen.nsw.gov.au
- www.nambucca.nsw.gov.au
- www.clarence.nsw.gov.au
- www.fnwc.nsw.gov.au

Disclaimer: the advice provided in this publication is intended as a source of information only. Always read the label before using any of the products mentioned. The North Coast Weeds Advisory Committee and associated staff do not guarantee that the publication is without flaw of any kind or is wholly appropriate for your particular purposes and therefore disclaims all liability for any error, loss or other consequence, which may arise from you relying on any information in this publication.